



## Irrigation Repairs

Project Address: **Commons Dr. - 1131**  
Project Name: **Nepenthe Association**  
On-Site Location: **See attached map & photos**

Carson Landscape Industries agrees to provide labor and materials to perform the following services.

### Work Description

#### *Zone 7*

- Station #47 – Repair (1) broken lateral line in root infested area by University – 1629
- Station #42 – Repair (2) broken Netafim lines by University - 1653

### Materials

- Misc. Irrigation Parts and Hardware

**Total Labor and Materials:**

**\$420.00**

**TERMS:** Payment in full is due upon completion of the work. A finance charge of 1.5% per month will be added to the unpaid balance after 30 days. In the event legal action is taken to collect on a past due account, the debtor agrees to pay all collection costs including interest, attorney’s fees and court costs. Any alteration or deviation from the above involving extra cost of material or labor will only be executed upon written orders for same, and will become an extra charge over the sum mentioned in this contract. All agreements must be in writing. Our workers are fully covered by workers compensation and our firm is covered by liability insurance. **This proposal may be withdrawn by us if not accepted within 30 days.**


#### **Carson Landscape Industries and The Grove**

*Contractor’s License No. 470283 & 1034968*  
9530 Elder Creek Rd.  
Sacramento, CA 95829-9306  
Tel: 916-856-5400 • Fax: 916-856-5410  
Email: olopez@carson1975.com

#### **Nepenthe Association**

1131 Commons Drive  
Sacramento, CA 95825-  
Tel: 916-929-8380  
Email: Abigail.Helman@fsresidential.com

By: Oscar Lopez (by KM)  
Name: Oscar Lopez  
Title: Operations Manager  
Date: 3/26/2026

By:   
Name: Abigail Helman  
Title: \_\_\_\_\_  
Date: \_\_\_\_\_

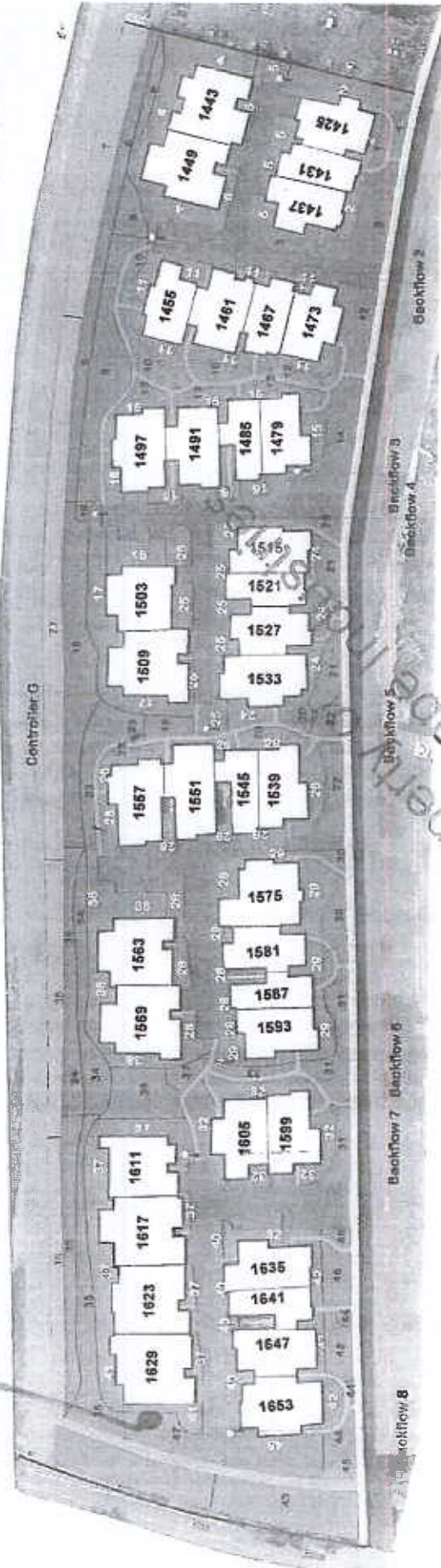
Nepenthe Owners Association

Zone 7 — Controller G

*broken lateral line*

Irrigation Controller Map

5/1/2021



Backflow #1		Backflow #2		Backflow #3		Backflow #4		Backflow #5		Backflow #6		Backflow #7		Backflow #8	
#	Plant Type	Plant Type	Irrigation Type	#	Plant Type	Irrigation Type	#	Plant Type	Irrigation Type	#	Plant Type	Irrigation Type	#	Plant Type	Irrigation Type
1	Turf	6	Turf	12	Turf	PS	20	Turf	PS	28	Shrub/GC	DfT	34	Turf/Shrub	R
2	Shrub/GC	7*	Turf	13	Turf	PS	21	Turf	PS	29	Shrub/GC	DfT	35	Turf/Shrub	R
3	Turf	8	Turf	14	Turf	PRN	22	Turf	PRN	30	Turf/Shrub	PRN	36*	Turf/Shrub	R
4	Shrub/GC	9	Turf	15	Shrub/GC	DfT	23	Turf	PS	31	Turf/Shrub	PRN	37	Shrub/GC	DfT
5	Shrub/GC	10	Turf				24	Shrub/GC	DfT	32	Shrub/GC	DfT	38*	Shrub/GC	DfT
		11	Shrub/GC				25	Shrub/GC	DfT	33	Shrub/GC	PS	39	Shrub/GC	PRN
							26	Shrub/GC	DfT						
							27*	Turf	PRN						

\* FERTILIZER

Legend	
	Backflow
	Controller G
	Pop-up Spray
	Pop-up Rotary Nozzle
	Rotor
	In-line Drip Tube
	Drip Emitters



