



Irrigation Repair

Project Address: **Commons Dr. - 1131**
Project Name: **Nepenthe Association**
On-Site Location: **See attached map & photos – Zone 7 1437 University Ave.**

Carson Landscape Industries agrees to provide labor and materials to perform the following services.

Work Description

Zone 7 Station #6 - Repair (1) broken Netafim line

Materials

Misc. Irrigation Parts & Hardware


Total Labor and Materials: \$125.00

TERMS: Payment in full is due upon completion of the work. A finance charge of 1.5% per month will be added to the unpaid balance after 30 days. In the event legal action is taken to collect on a past due account, the debtor agrees to pay all collection costs including interest, attorney’s fees and court costs. Any alteration or deviation from the above involving extra cost of material or labor will only be executed upon written orders for same, and will become an extra charge over the sum mentioned in this contract. All agreements must be in writing. Our workers are fully covered by workers compensation and our firm is covered by liability insurance. **This proposal may be withdrawn by us if not accepted within 30 days.**

Carson Landscape Industries
Contractor’s License No. 470283
9530 Elder Creek Rd.
Sacramento, CA 95829-9306
Tel: 916-856-5400 • Fax: 916-856-5410
Email: olopez@carson1975.com

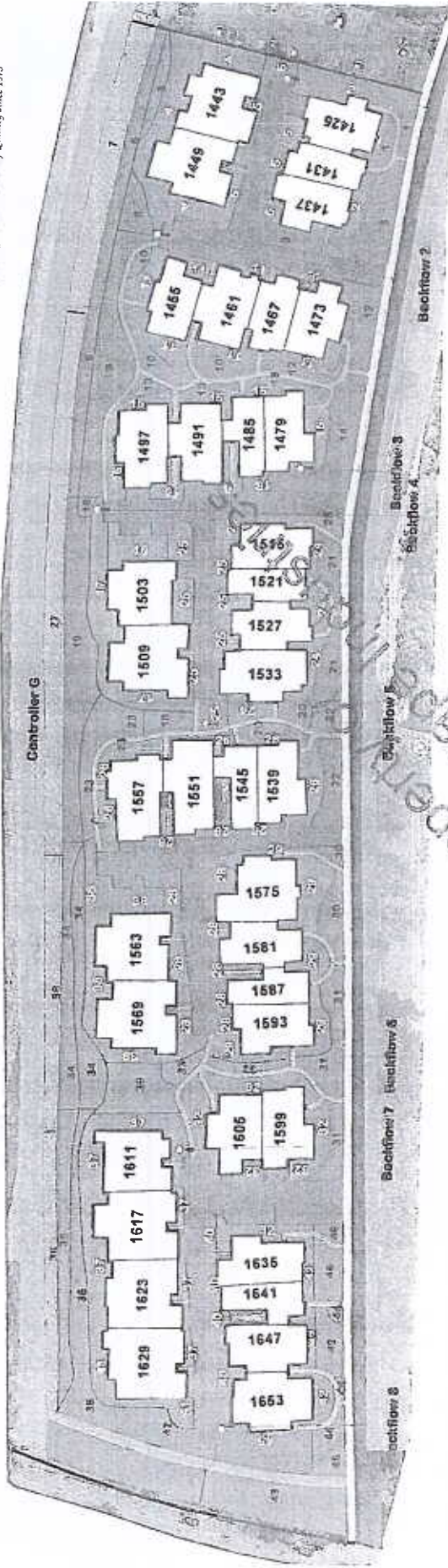
Nepenthe Association
1131 Commons Drive
Sacramento, CA 95825-
Tel: 916-929-8380
Email: Nicole.Marks@fsresidential.com

By: Oscar Lopez (by SS)
Name: Oscar Lopez
Title: Account Manager
Date: 6/16/2025

By: 
Name: Nicole Marks
Title: GENERAL MANAGER
Date: 6/18/25

Nepenthe Owners Association
Zone 7—Controller G

Irrigation Controller Map
5/1/2021



Backflow #1	Backflow #2	Backflow #3	Backflow #4	Backflow #5	Backflow #6	Backflow #7	Backflow #8
# 1 Plant Type: Turf Irrigation Type: PS	# 6 Plant Type: Turf Irrigation Type: PS	# 12 Plant Type: Turf Irrigation Type: PS	# 16 Plant Type: Shrub/GC Irrigation Type: DRT	# 20 Plant Type: Turf Irrigation Type: PS	# 28 Plant Type: Shrub/GC Irrigation Type: DRT	# 34 Plant Type: Turf/Shrub Irrigation Type: R	# 40 Plant Type: Shrub/GC Irrigation Type: DRT
# 2 Plant Type: Shrub/GC Irrigation Type: DRT	# 7* Plant Type: Turf Irrigation Type: PS	# 13 Plant Type: Turf Irrigation Type: PS	# 17 Plant Type: Shrub/GC Irrigation Type: DRT	# 21 Plant Type: Turf Irrigation Type: PS	# 29 Plant Type: Shrub/GC Irrigation Type: DRT	# 35 Plant Type: Turf/Shrub Irrigation Type: R	# 41 Plant Type: Shrub/GC Irrigation Type: DRT
# 3 Plant Type: Turf Irrigation Type: PS	# 8 Plant Type: Turf Irrigation Type: PS	# 14 Plant Type: Turf Irrigation Type: PRN	# 18 Plant Type: Turf Irrigation Type: PS	# 22 Plant Type: Turf Irrigation Type: PRN	# 30 Plant Type: Turf/Shrub Irrigation Type: PRN	# 36* Plant Type: Turf/Shrub Irrigation Type: R	# 42 Plant Type: Shrub/GC Irrigation Type: DRT
# 4 Plant Type: Shrub/GC Irrigation Type: DRT	# 9 Plant Type: Turf Irrigation Type: PRN	# 15 Plant Type: Shrub/GC Irrigation Type: DRT	# 19 Plant Type: Turf Irrigation Type: PRN	# 23 Plant Type: Turf Irrigation Type: PS	# 31 Plant Type: Turf/Shrub Irrigation Type: PRN	# 37 Plant Type: Shrub/GC Irrigation Type: DRT	# 43 Plant Type: Shrub/GC Irrigation Type: R
# 5 Plant Type: Shrub/GC Irrigation Type: DRT	# 10 Plant Type: Turf Irrigation Type: PRN	# 11 Plant Type: Shrub/GC Irrigation Type: DRT		# 24 Plant Type: Shrub/GC Irrigation Type: DRT	# 32 Plant Type: Shrub/GC Irrigation Type: DRT	# 38* Plant Type: Shrub/GC Irrigation Type: DRT	# 44 Plant Type: Shrub/GC Irrigation Type: PRN
				# 25 Plant Type: Shrub/GC Irrigation Type: DRT	# 33 Plant Type: Shrub/GC Irrigation Type: PS	# 39 Plant Type: Shrub/GC Irrigation Type: PRN	# 45 Plant Type: Turf/Shrub Irrigation Type: PS
				# 26 Plant Type: Shrub/GC Irrigation Type: DRT			# 46 Plant Type: Shrub/GC Irrigation Type: PRN
				# 27* Plant Type: Turf Irrigation Type: PRN			# 47 Plant Type: Shrub/GC Irrigation Type: R

Legend

	Backflow PS		Popup Spray		Rotar		Inline Dripline		Drip Emitters
	Controller G PRN		Popup Rotary Nozzle						



