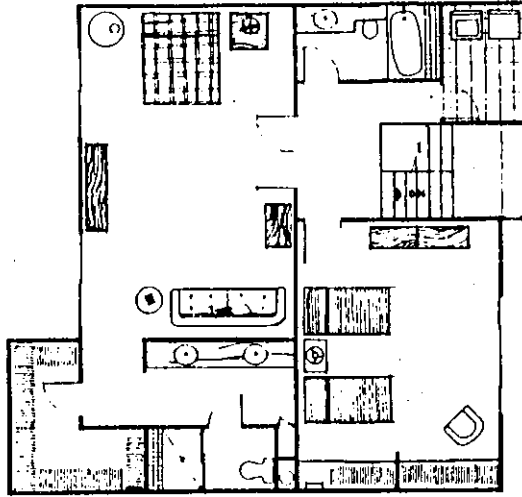
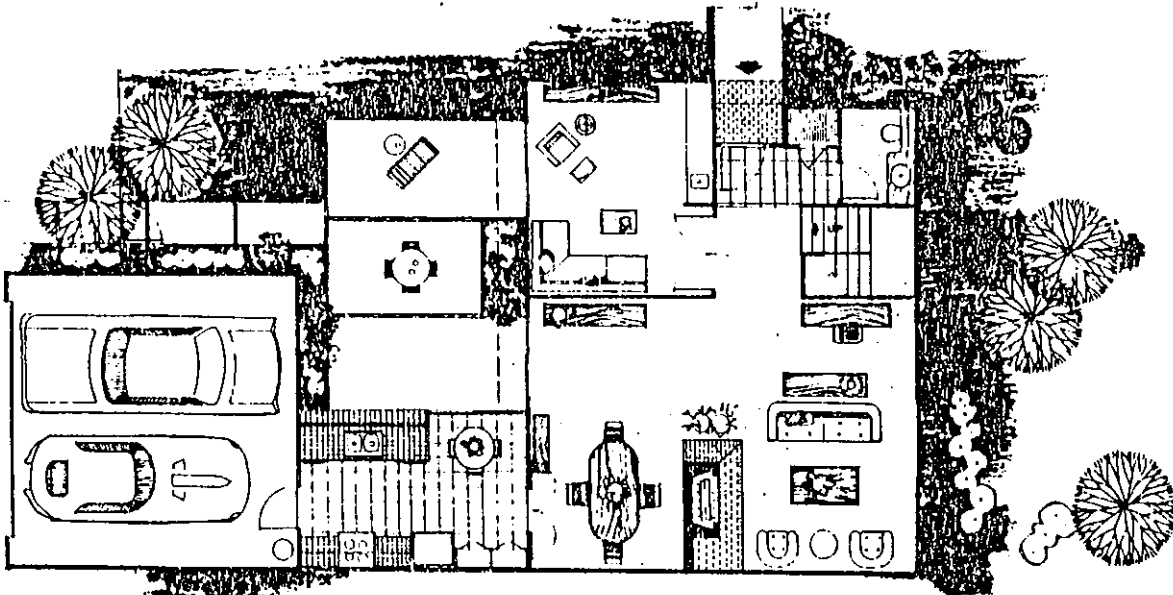


5500A

luxury and spaciousness are the keynotes of the Plan 5500A. From a separate foyer through double doors, you may enter a cozy den with wet bar or pass on into the large living room. The dining room beyond, with its lavish expanse of glass, looks out onto an enclosed garden patio. Upstairs, your spacious master-bedroom includes a sitting area with optional fireplace, a large closeted dressing room with double vanity and bath. There is also a convenient utility room and large second bedroom with its own private bath.



SECOND FLOOR PLAN



FIRST FLOOR PLAN

5500A

Floor plan details and features subject to change without notice. Patio size may vary with location.