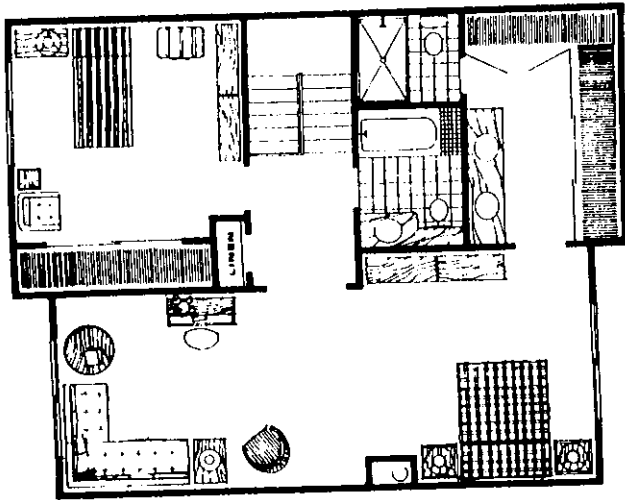



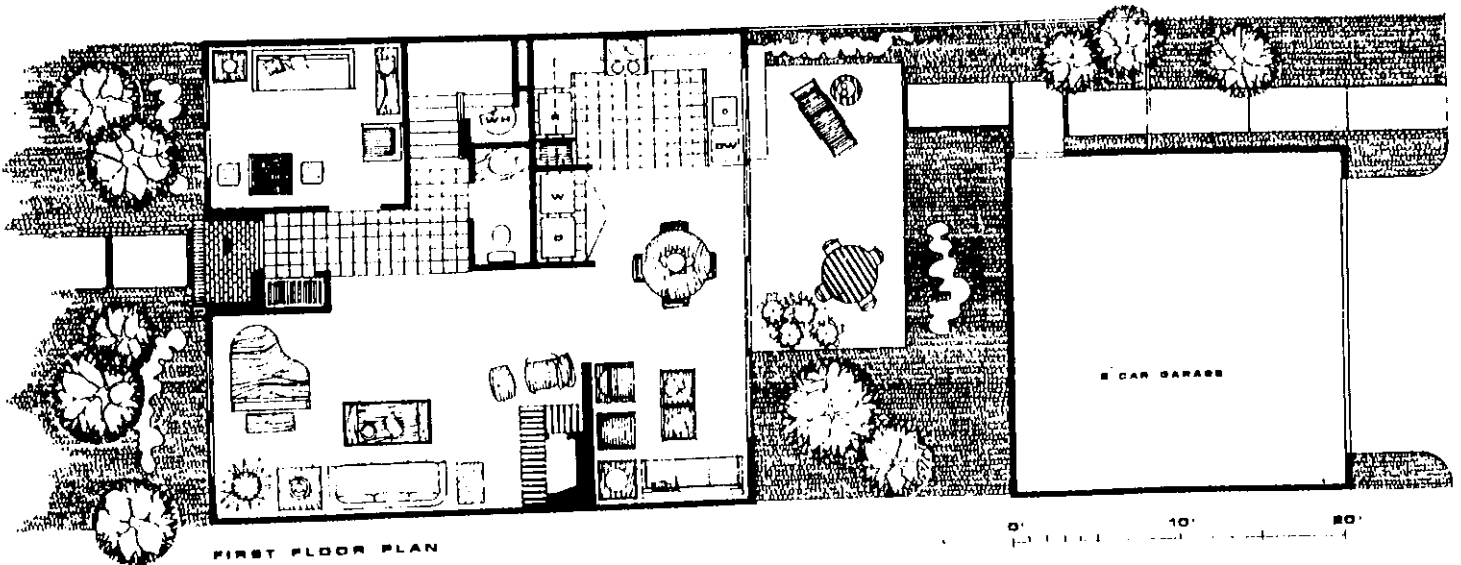
5000G



SECOND FLOOR PLAN

Luxury and spaciousness are the keynotes of the 5000 Plan. From a separate foyer, through double doors, you may enter a cozy den or pass on into the large living room. The dining room beyond, with its lavish expanse of glass, looks out onto an enclosed garden patio. Upstairs, your spacious master bedroom includes a sitting area and a large closeted dressing room with double vanity and bath. The second bedroom has its own private bath.

Totally modern electric heating, air conditioning and appliances by General  Electric.



FIRST FLOOR PLAN

0' 10' 20'