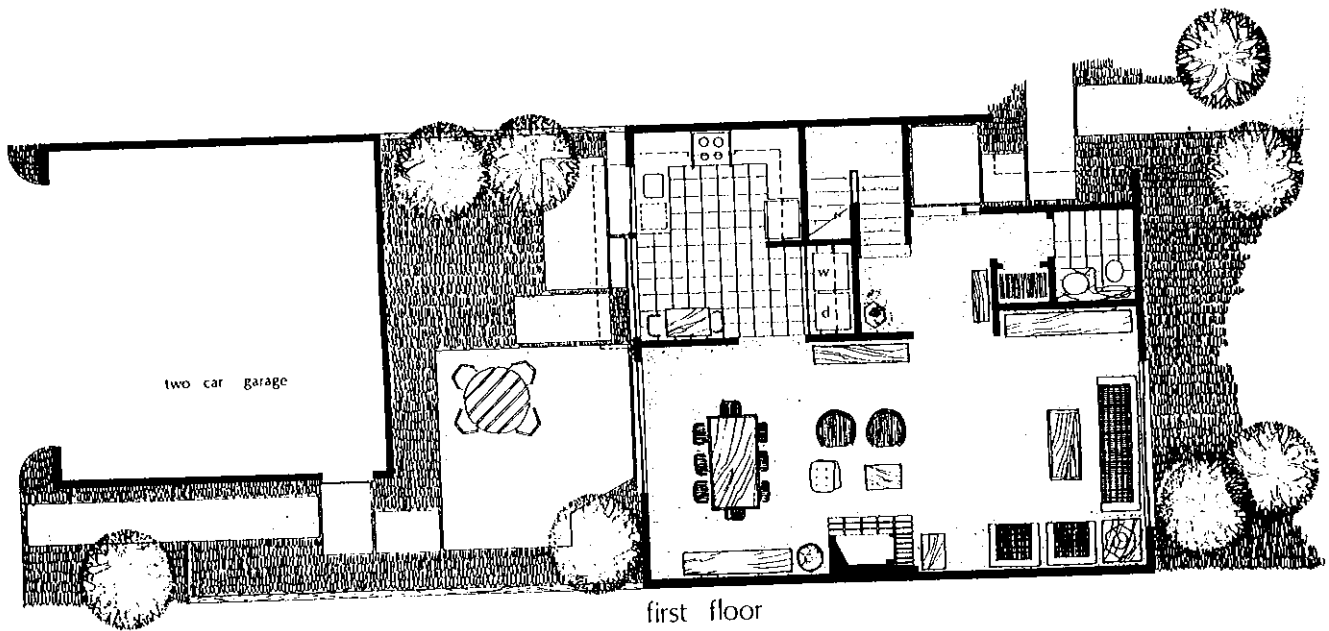


second floor



first floor

The combined ease and elegance of the 1720 plan offer any family room to live and entertain in understated luxury.

Entry into the large living room and dining area is preceded by a separate foyer featuring closet space and powder room. Upstairs, double doors open to reveal the master bedroom suite, which includes a sitting area, closeted dressing room and private bath. The second bedroom and bath are joined by a separate den — an extra room just for yourself.

Totally modern electric heating, air conditioning and appliances by General Electric.

1720