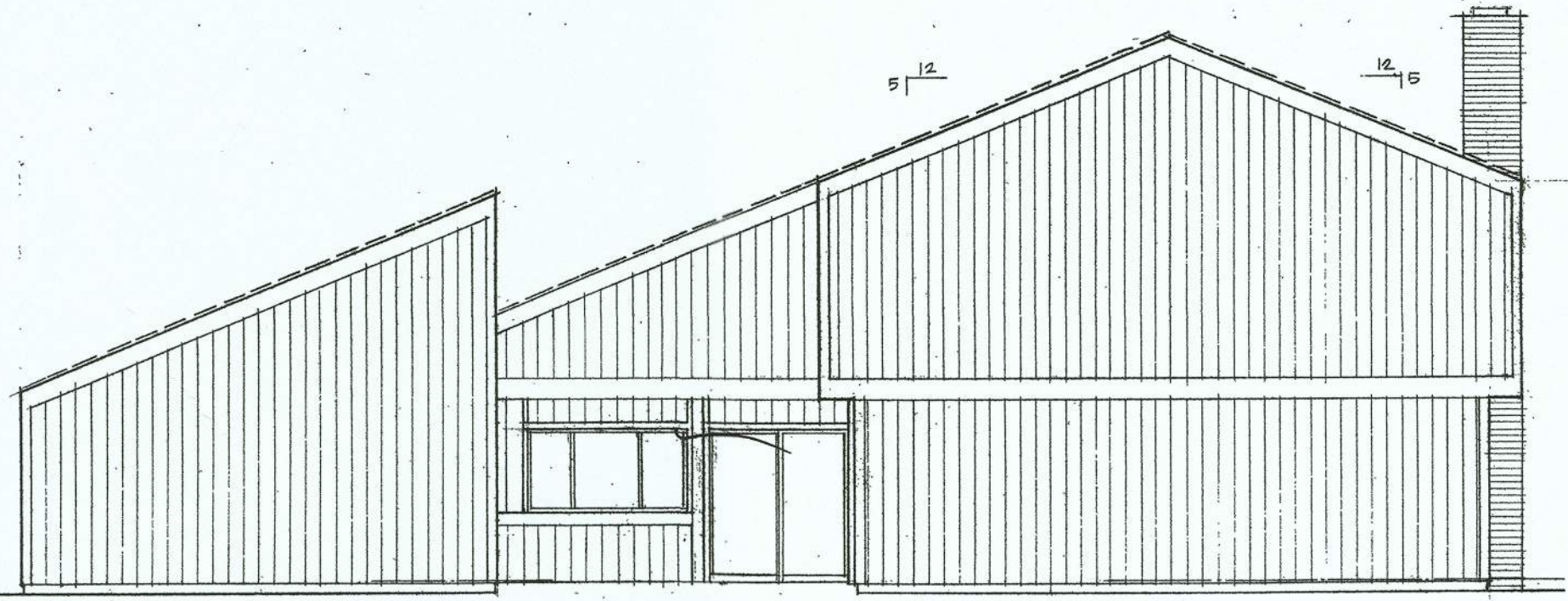
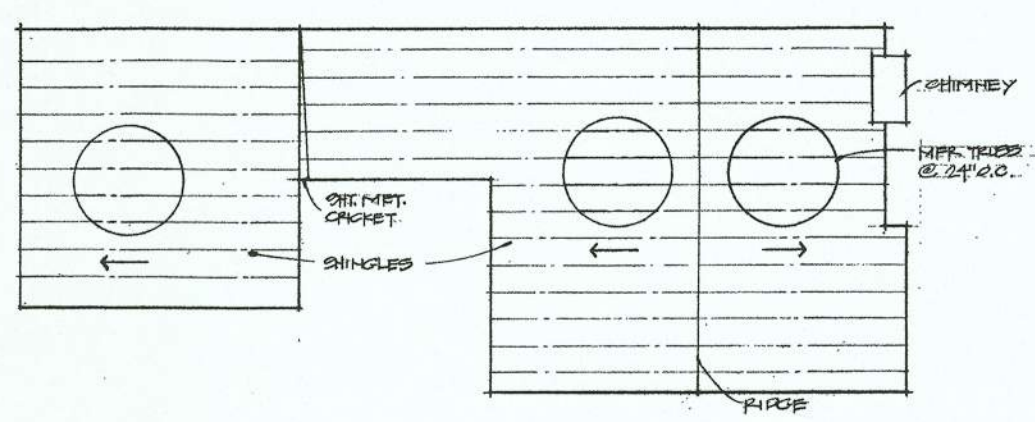


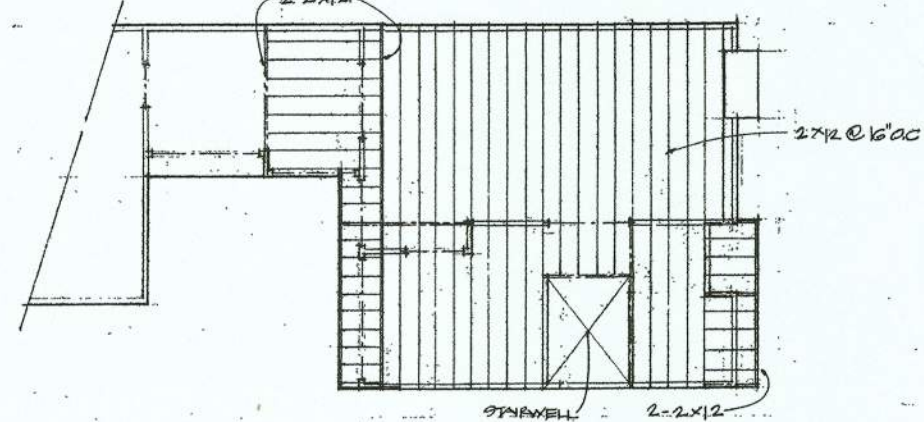
ELEVATION #2 $\frac{1}{4}'' = 1'-0''$



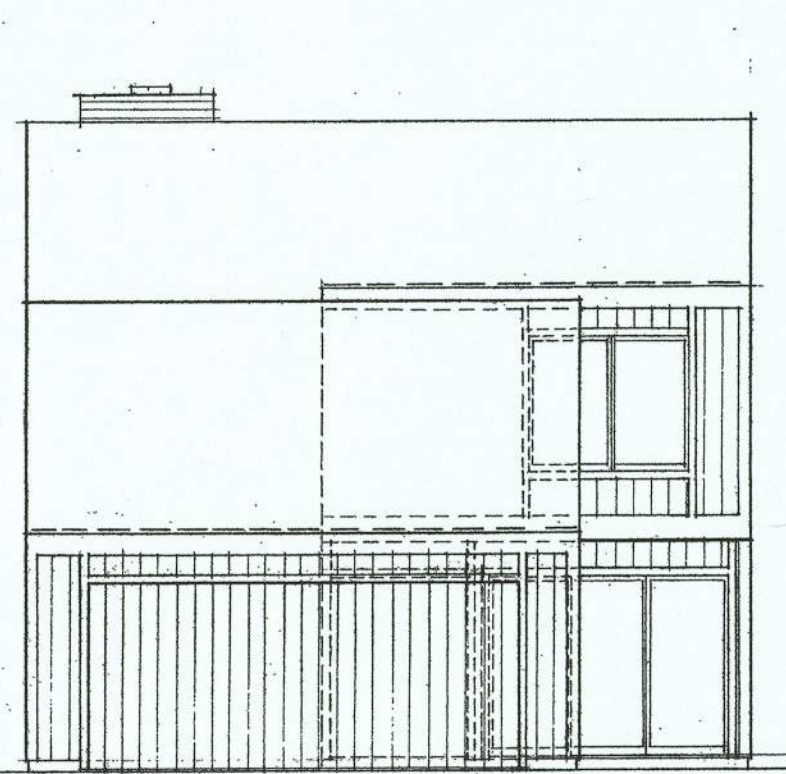
ELEVATION #1 $\frac{1}{4}'' = 1'-0''$



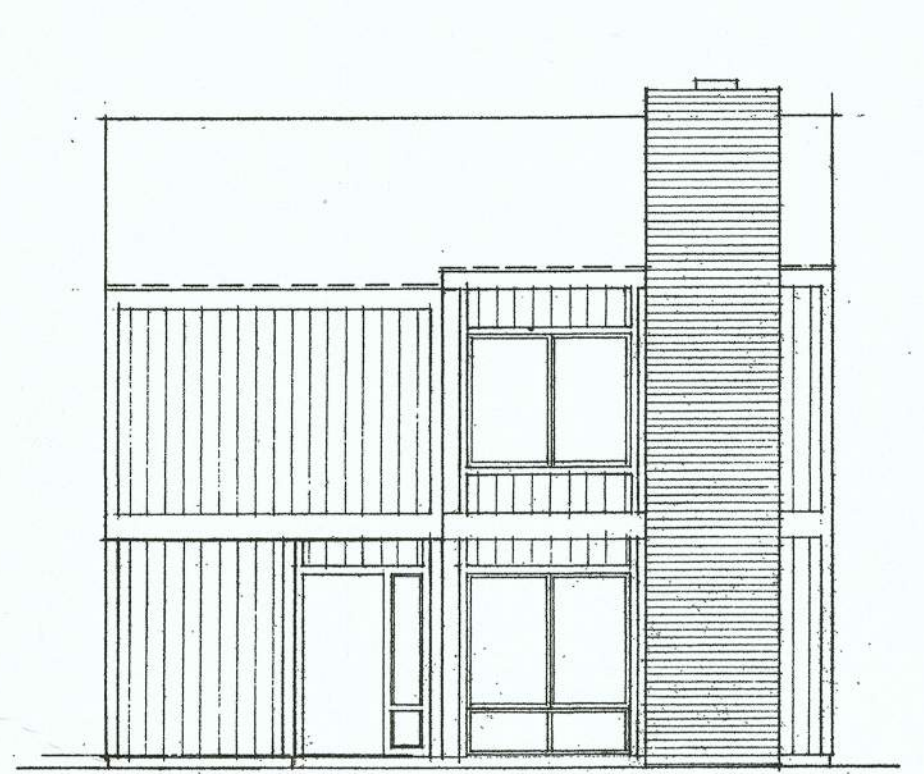
ROOF FRAMING PLAN $\frac{1}{8}'' = 1'-0''$



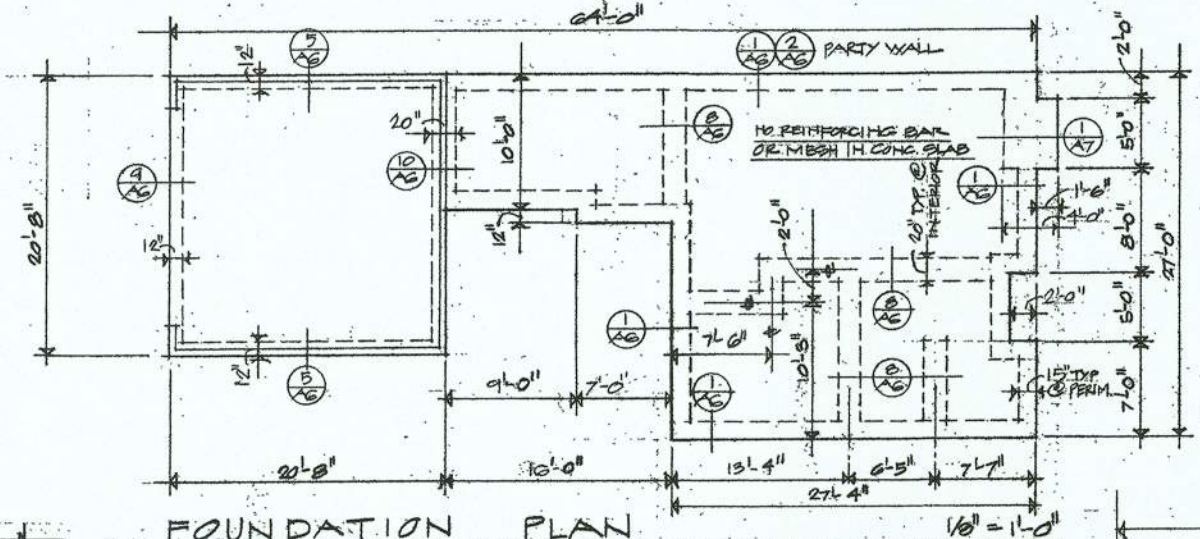
SECOND FLOOR FRAMING PLAN $\frac{1}{8}'' = 1'-0''$



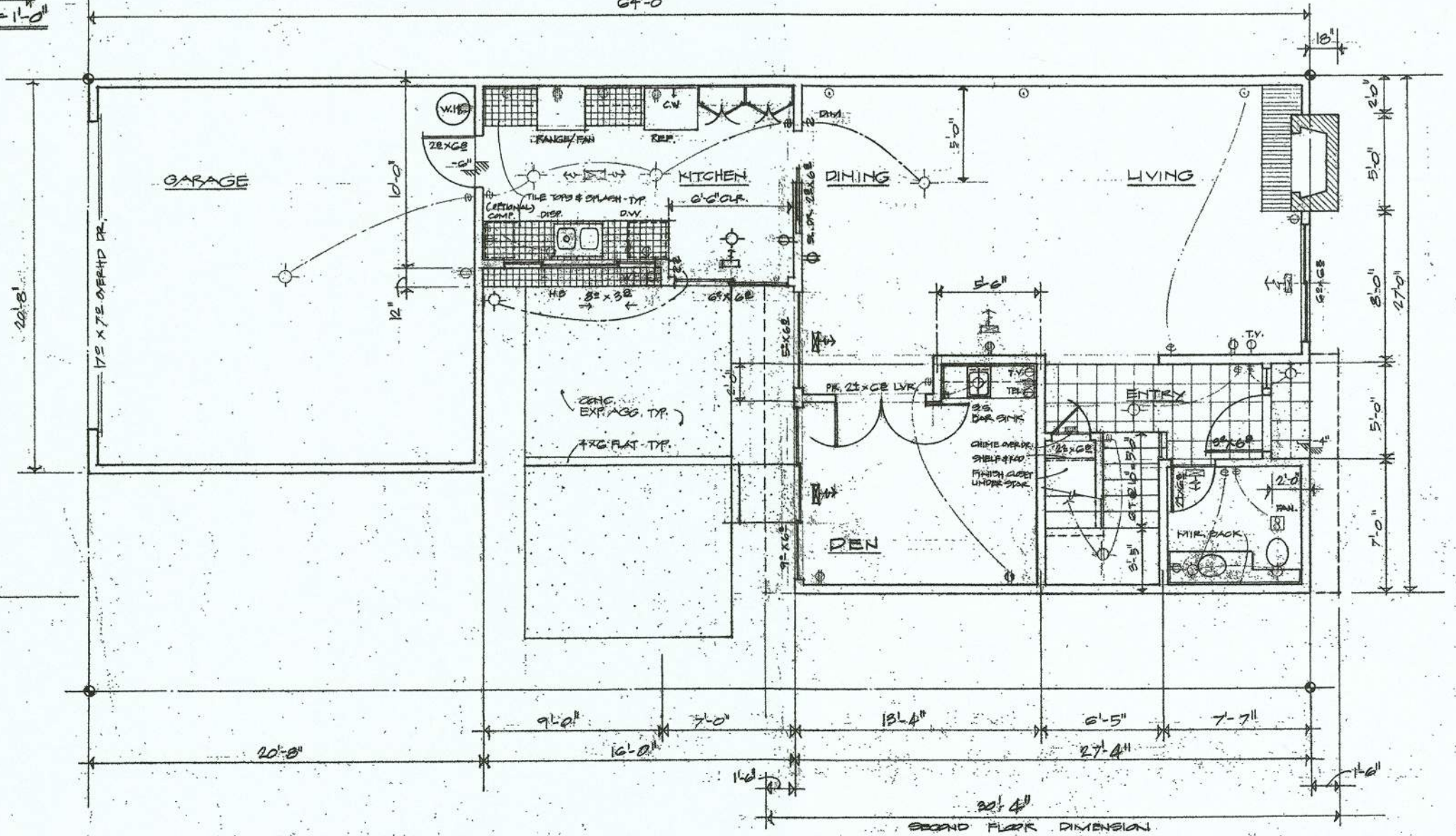
ELEVATION #4 $\frac{1}{4}'' = 1'-0''$



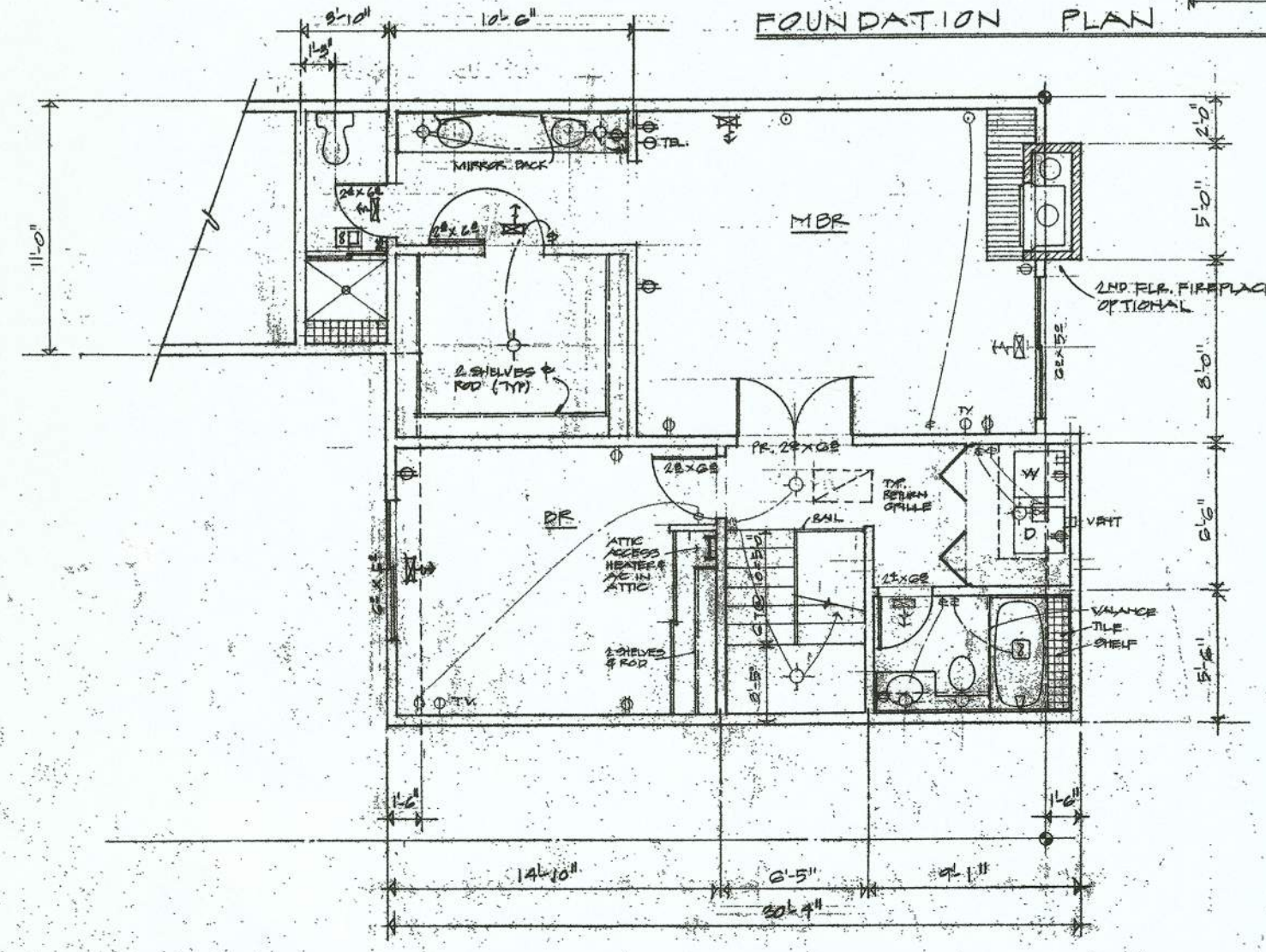
ELEVATION #3 $\frac{1}{4}'' = 1'-0''$



FOUNDATION PLAN $\frac{1}{8}'' = 1'-0''$



FIRST FLOOR PLAN $\frac{1}{4}'' = 1'-0''$



SECOND FLOOR PLAN - HOUSE #3 $\frac{1}{4}'' = 1'-0''$

Drawn	Checked
Date	2/10/76
Revision Date	By AP
	4/8/76

This drawing is not final and is to be used for construction until it is signed by the Architect and the Owner.

POWELL-TRICHERT
MEADORS
ARCHITECTS
SANTA MONICA UNIT #2A



Owner

© 1976
Albert M. Dreyfus
Leland S. Blackford

Architect
Dreyfus & Blackford
Architects & Planners
3840 Folsom Boulevard, Sacramento, California 95821
452-9861



Sheet Number



1 of 7 Sheets
FPS 13, 1176