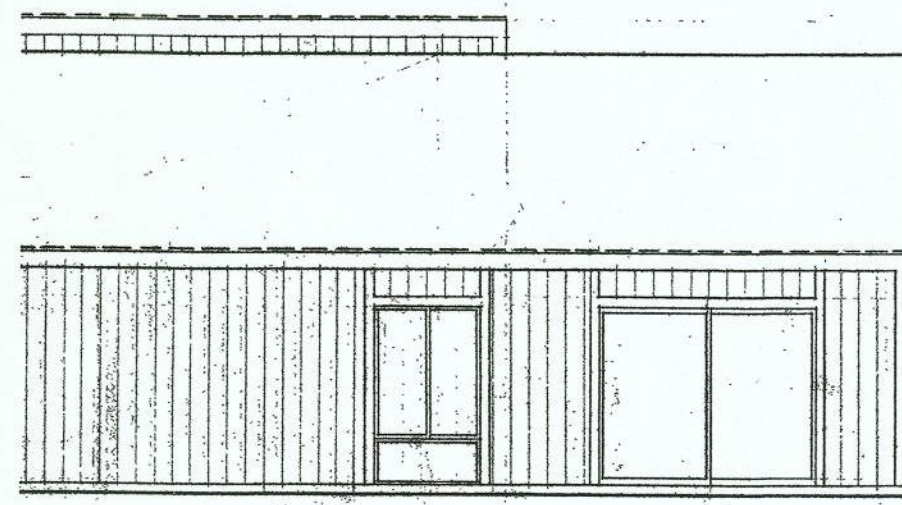
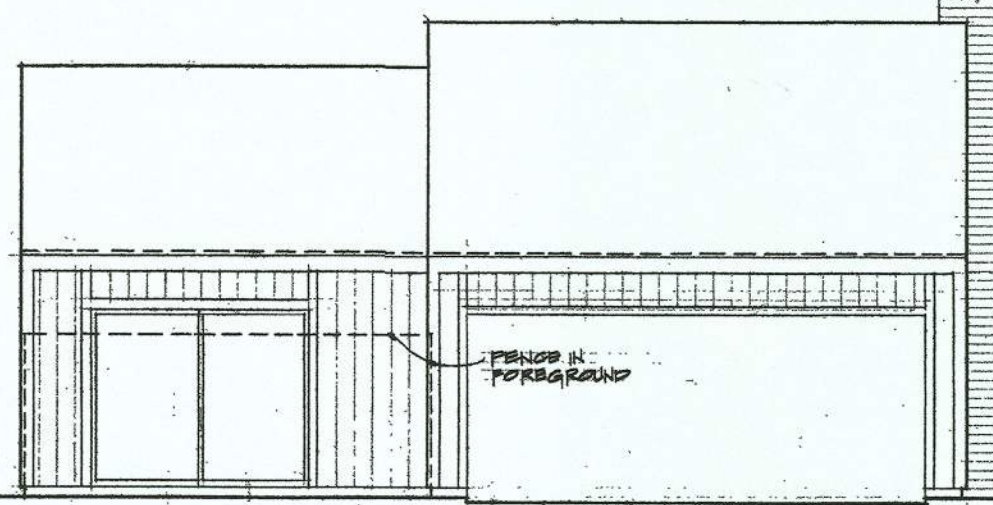


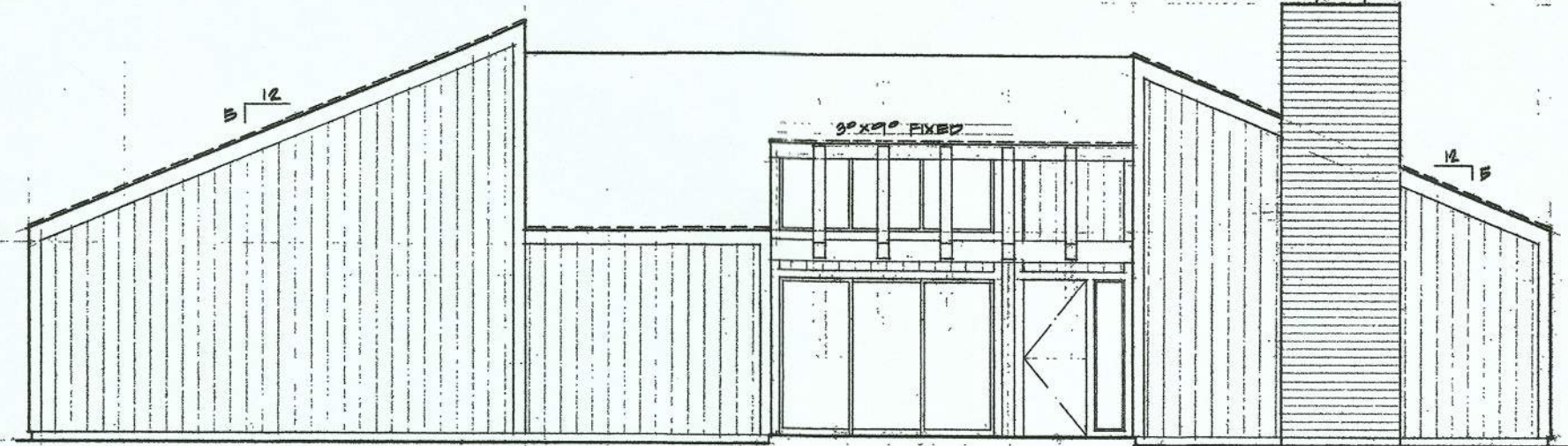
Drawn	Checked
DATE MARCH 24, 1976	
REVISION DATE	BY AP
4/1/76	



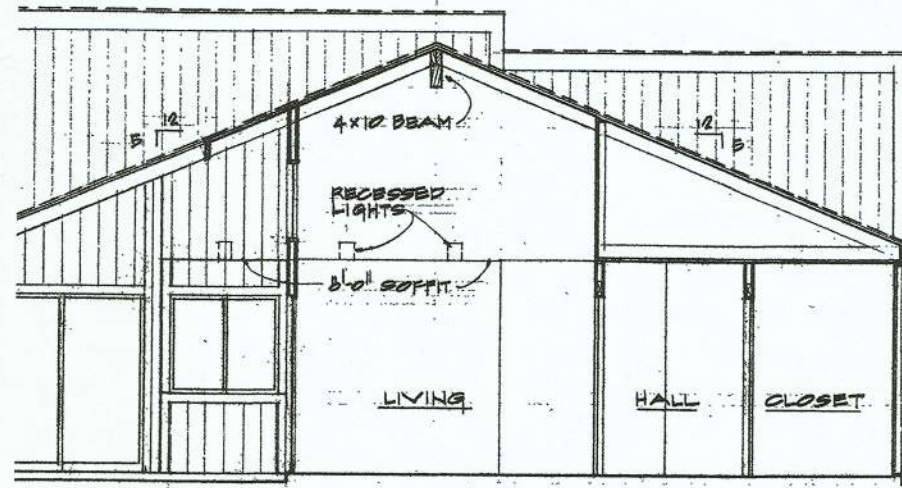
ELEVATION #3 1/2" = 1'-0"



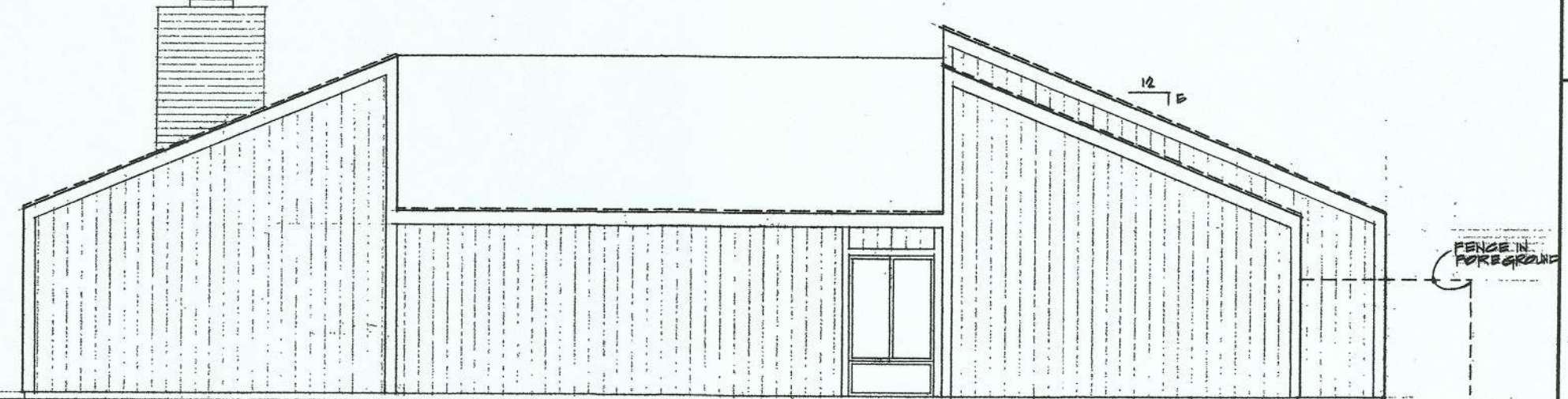
ELEVATION #2 1/2" = 1'-0"



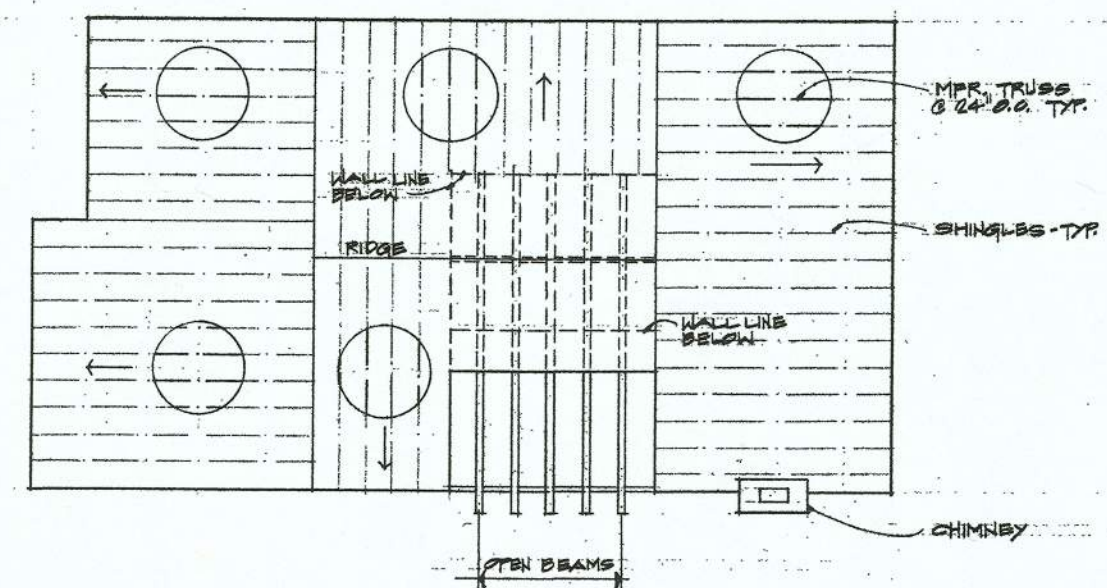
ELEVATION #1 1/2" = 1'-0"



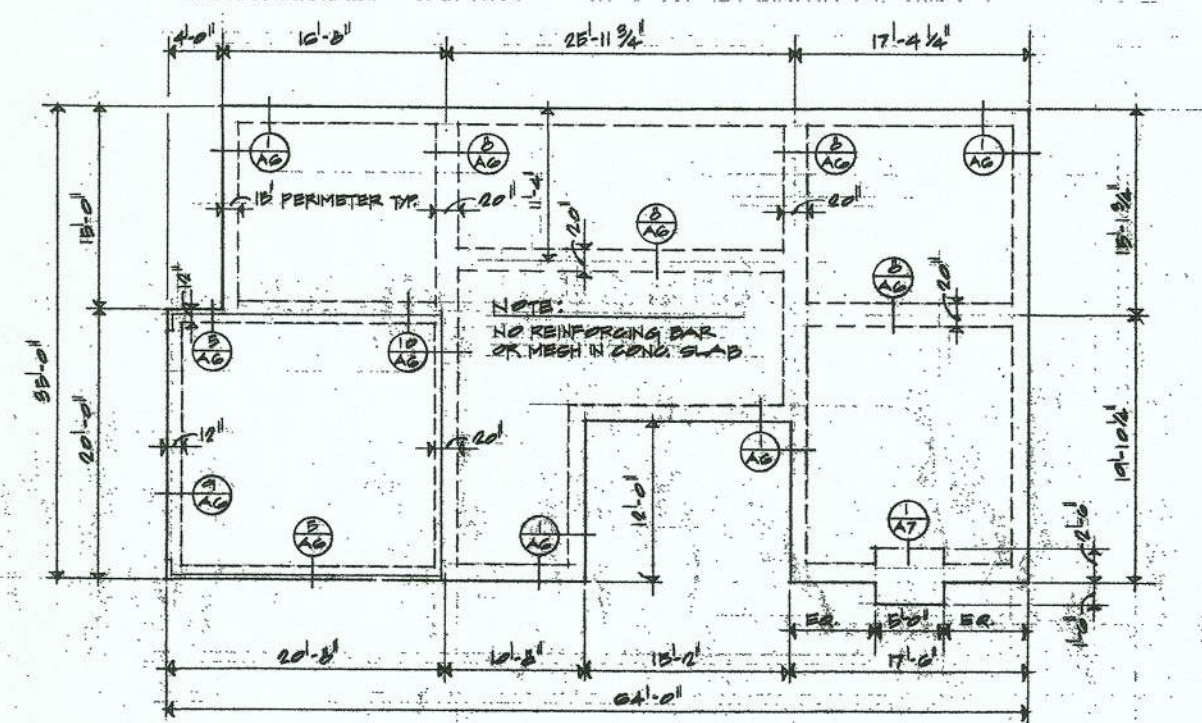
SECTION A-A 1/2" = 1'-0"



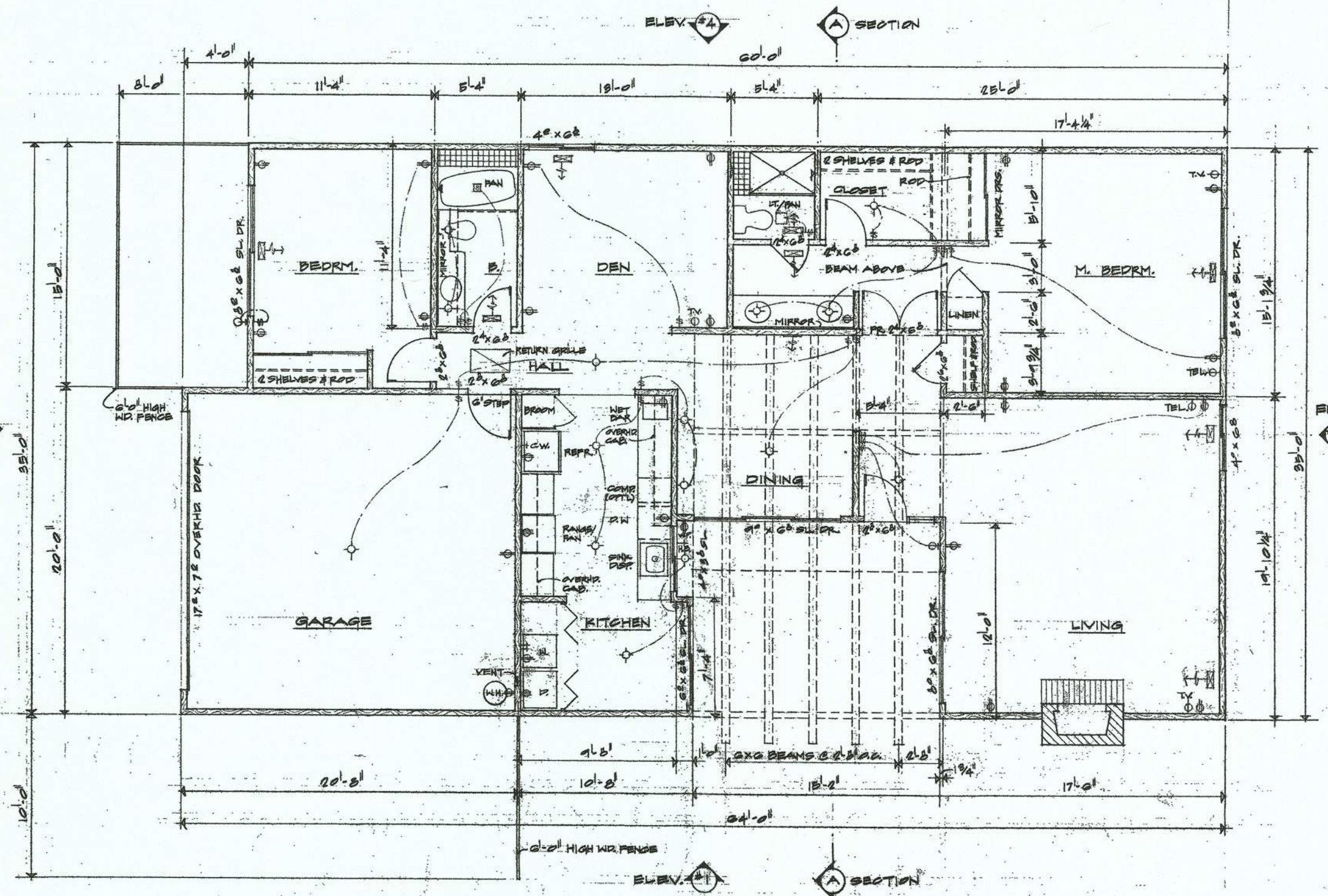
ELEVATION #4 1/2" = 1'-0"



ROOF FRAMING PLAN 1/8" = 1'-0"



FOUNDATION PLAN 1/8" = 1'-0"



FLOOR PLAN 1/4" = 1'-0"

This drawing is not final and is to be used for construction until it is signed by the architect and the owner.

POWELL-TEICHERT
MEADORS
CAMPUS COMMONS UNIT # 2300

2300

Architect
Dreyfuss & Blackford
3540 Polkton Boulevard, Sacramento, California 95821
482-6661

Sheet Number
A2A
of 2 Sheets