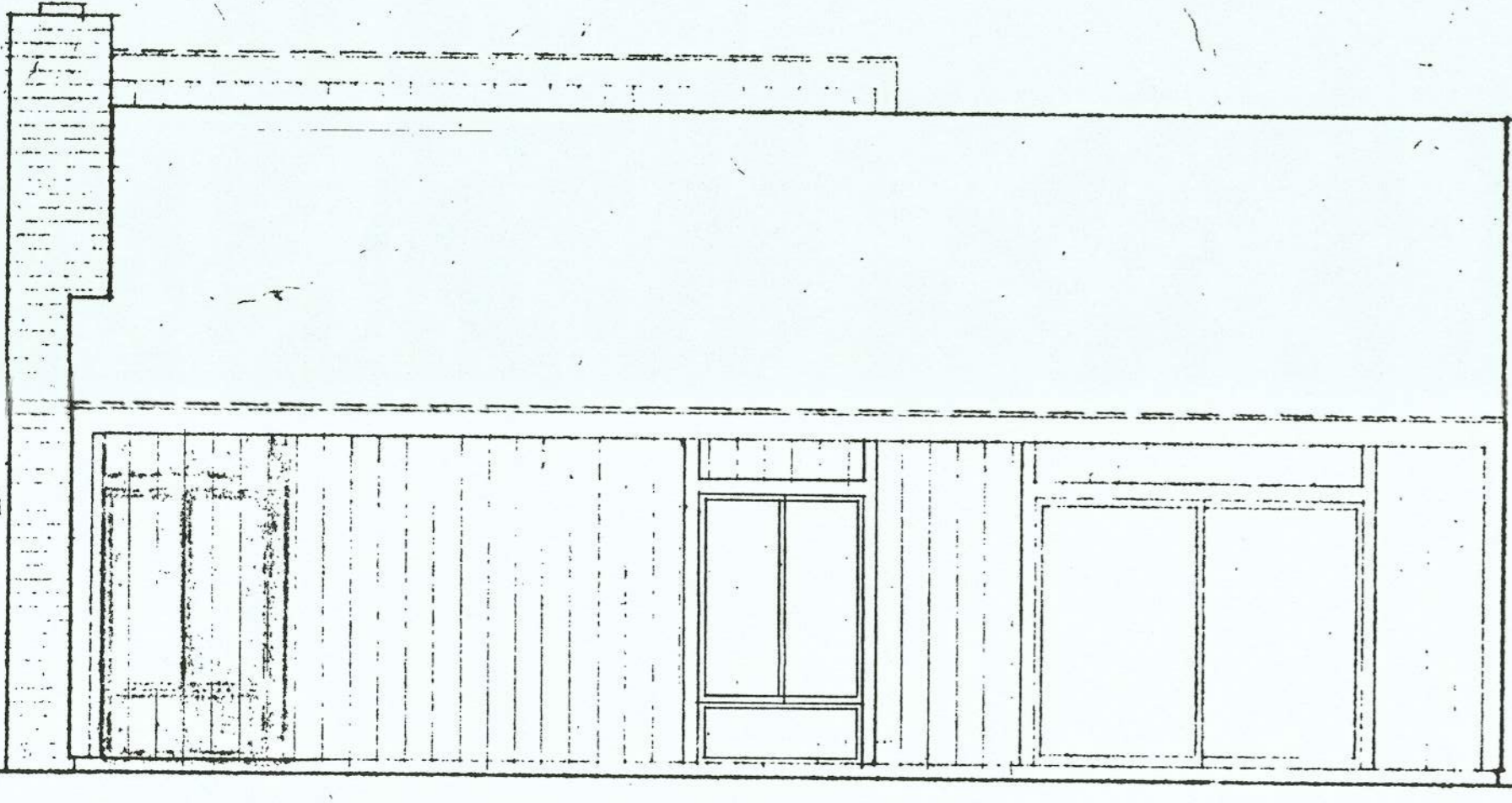
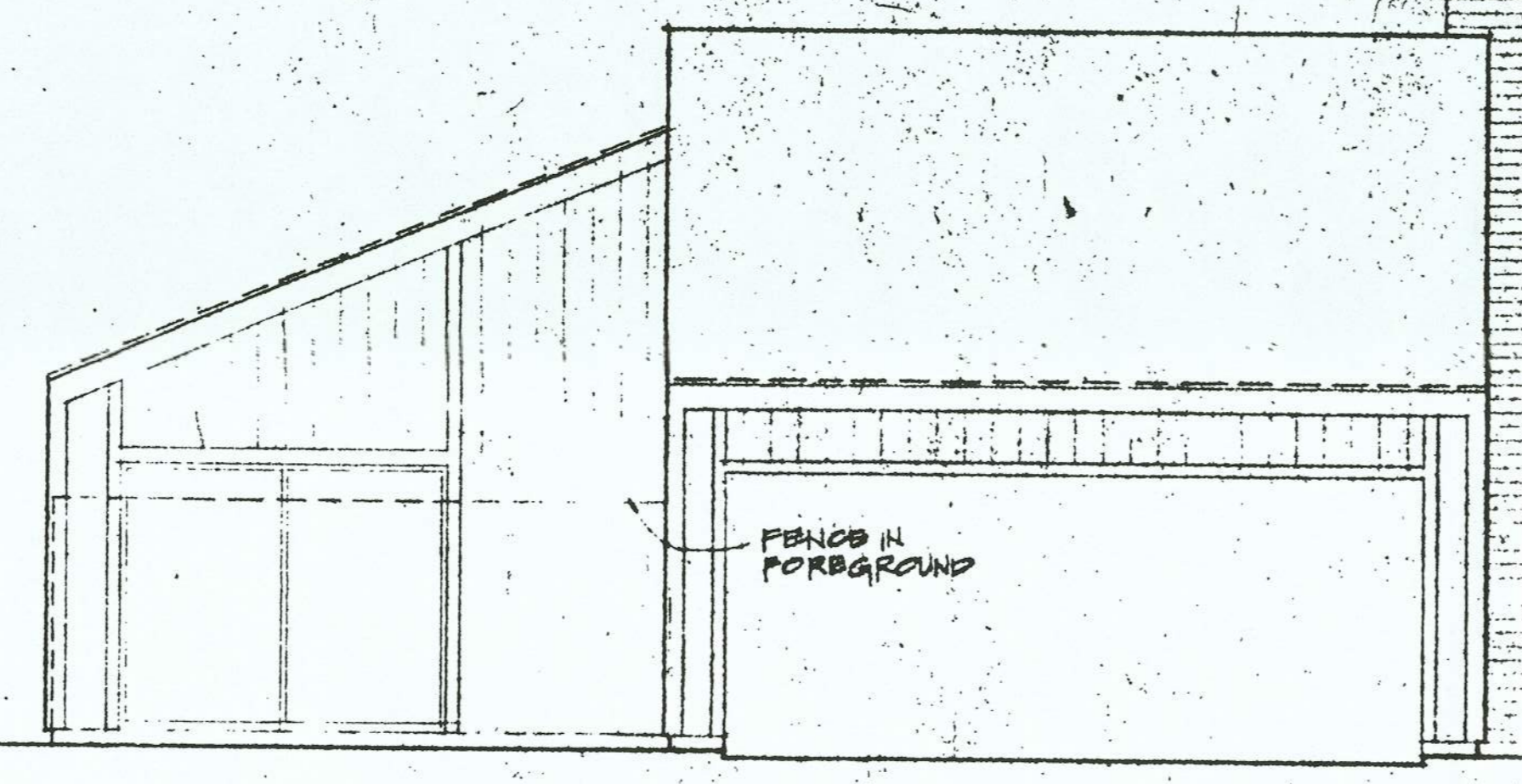


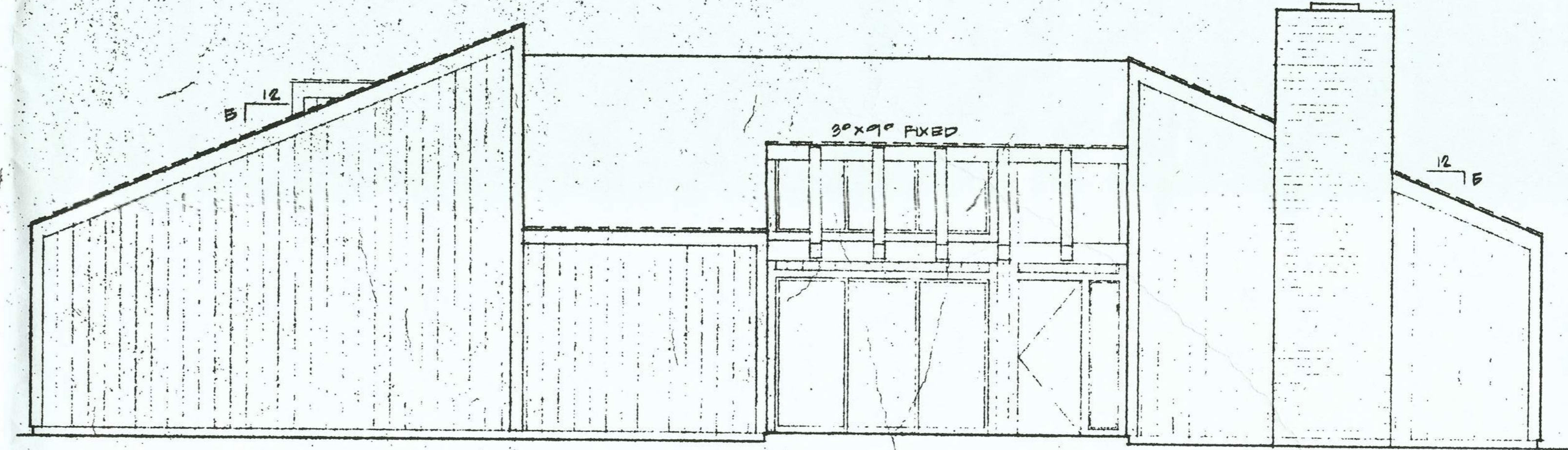
Drawn	Checked
Date MARCH 21, 1976	
Revision Date	By/No
4/8/76	



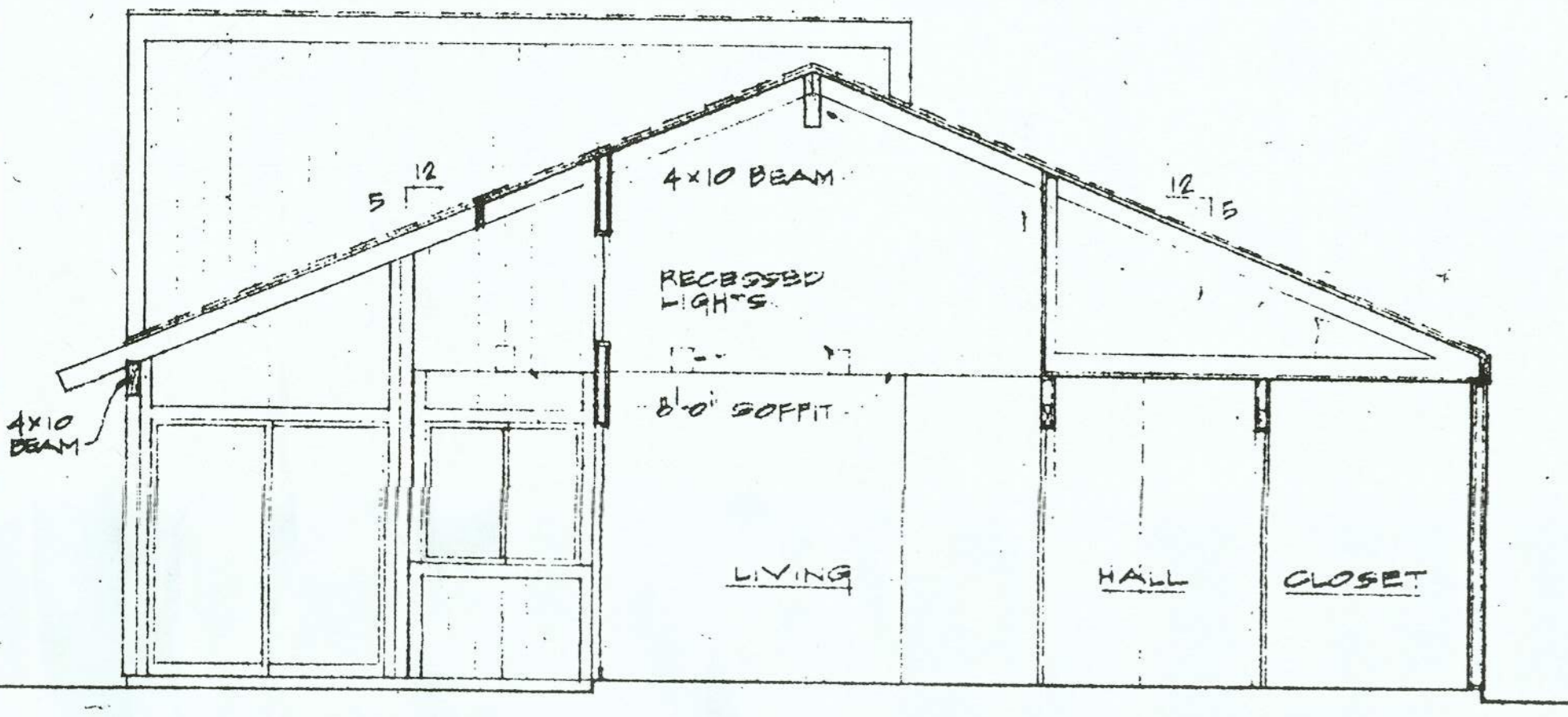
ELEVATION #3 1/2" = 1'-0"



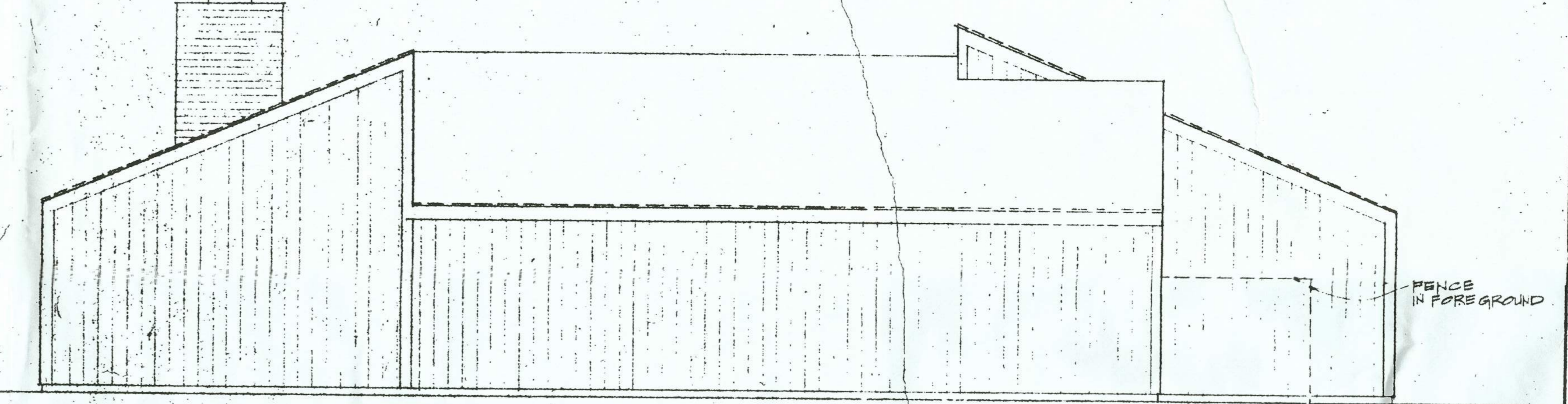
ELEVATION #2 1/2" = 1'-0"



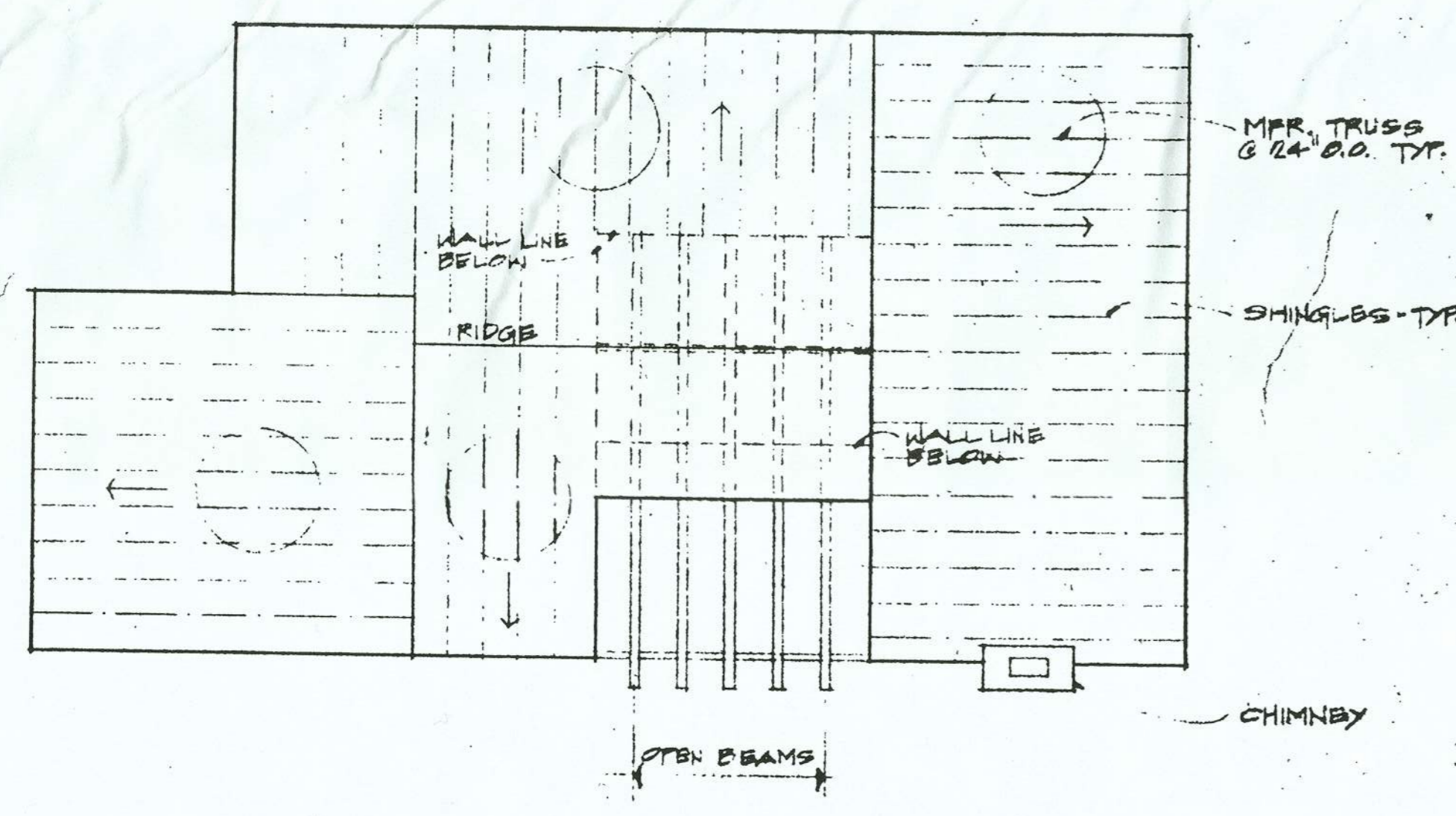
ELEVATION #1 1/2" = 1'-0"



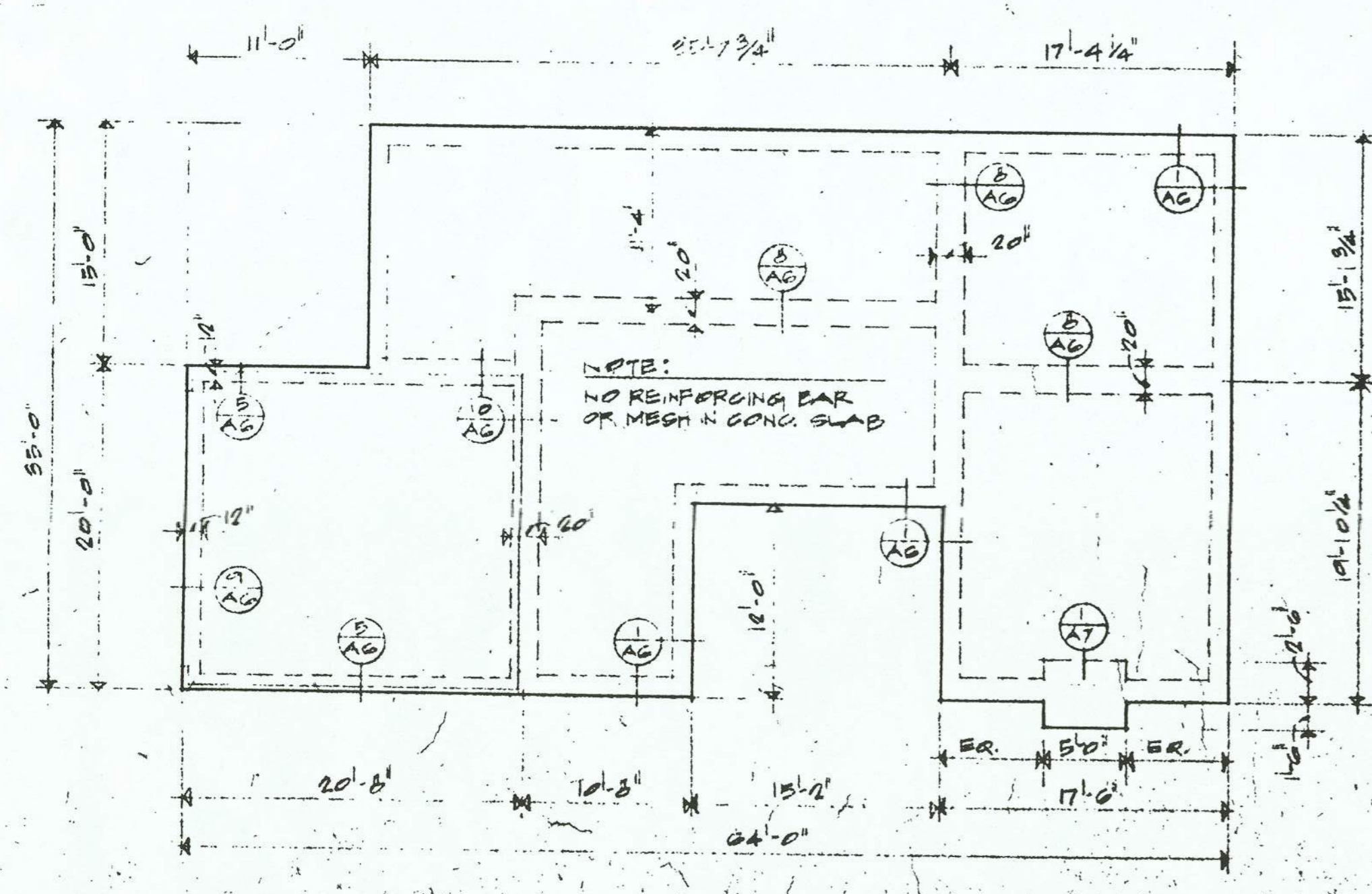
SECTION A-A 1/2" = 1'-0"



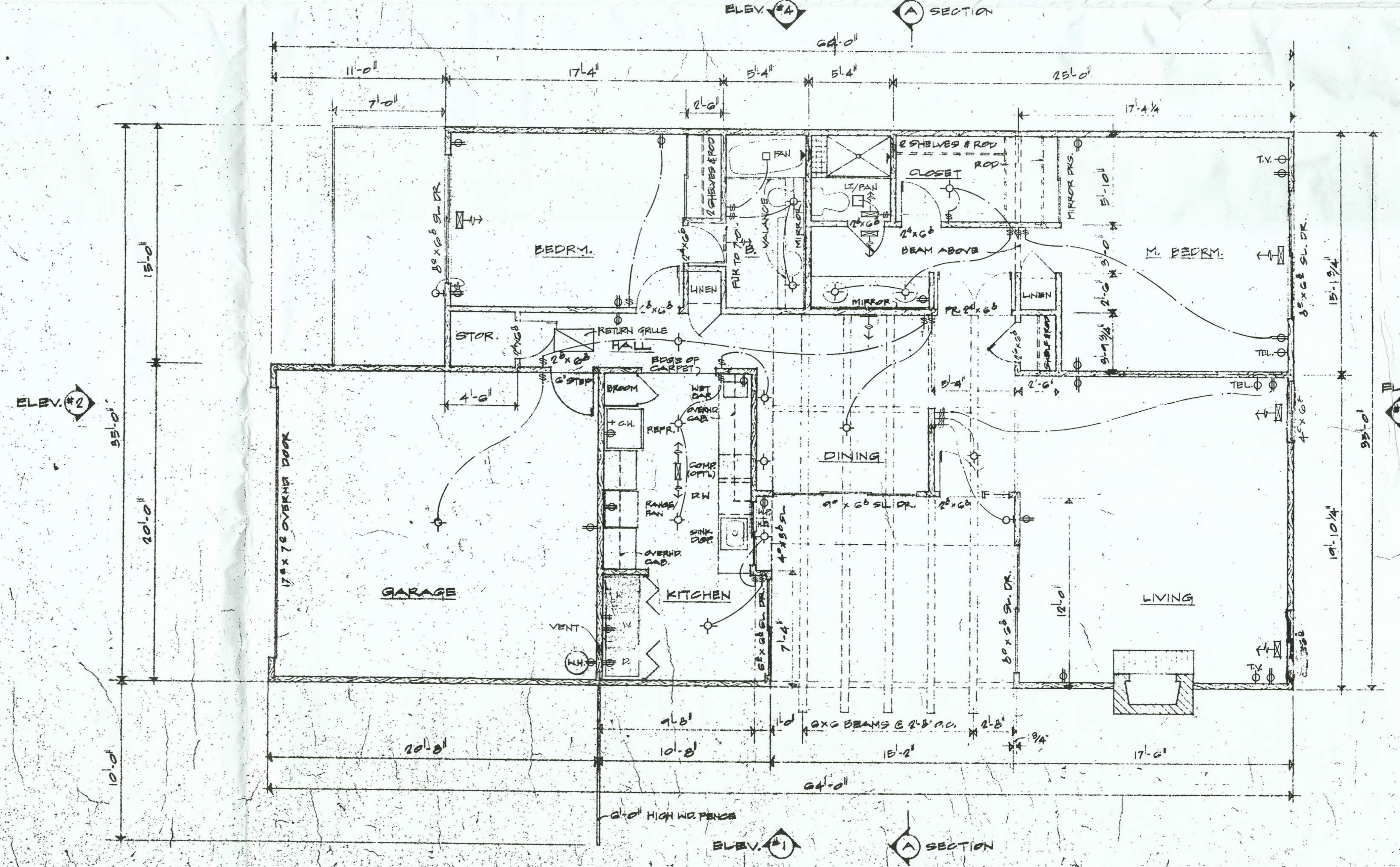
ELEVATION #4 1/2" = 1'-0"



ROOF FRAMING PLAN 1/8" = 1'-0"



FOUNDATION PLAN 1/8" = 1'-0"



FLOOR PLAN 1/2" = 1'-0"

This drawing is not final and is to be used for construction only as approved by the architect and the owner.

POWELL-TEICHERT
MEADORS
CAMPUS COMMUNITY UNIT #2A

2200

Architects & Planners
3540 Folsom Boulevard, Sacramento, California 95821

Architect: **AS**

Sheet Number
AS
of Sheets
PLAN 2200 MODEL